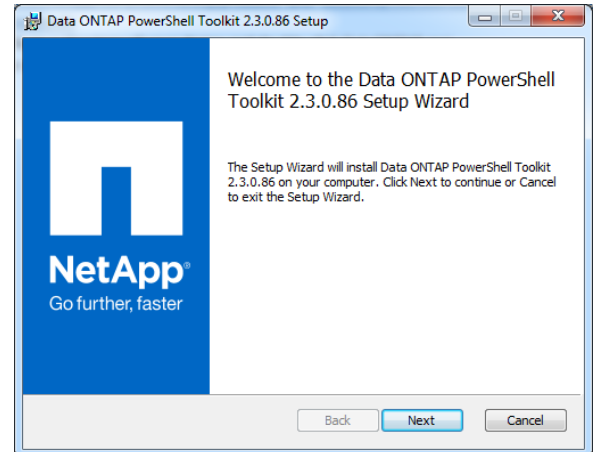
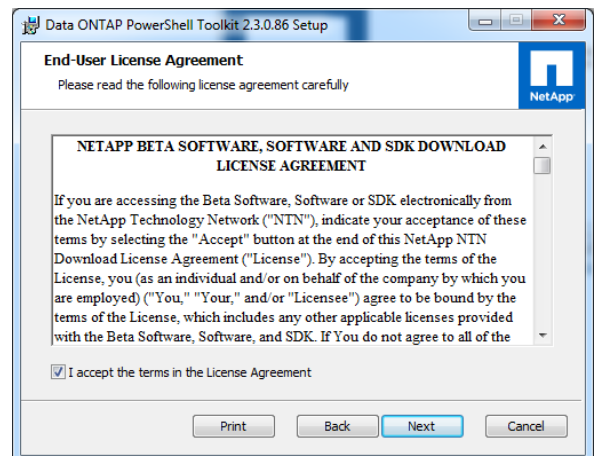


Using NetApp Data ONTAP PowerShell Toolkit v2.3

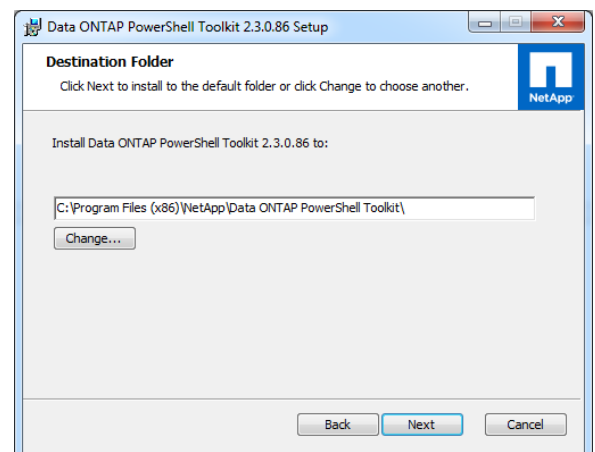
- 1) Thankfully, NetApp released an installable PSK. Register for an account and download the DataONTAP.msi file from here:
https://communities.netapp.com/community/products_and_solutions/microsoft/powershell/data_ontap_powershell_toolkit_downloads
- 2) Extract the .zip file to a directory of your choice and double-click DataONTAP.msi.
- 3) Click Next on the welcome screen.



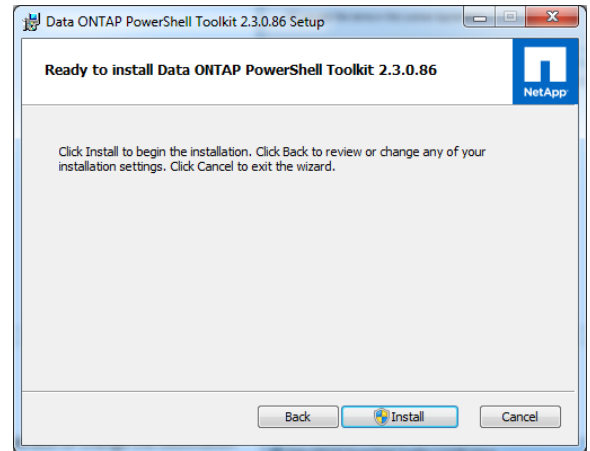
- 4) Accept the license terms and click Next.



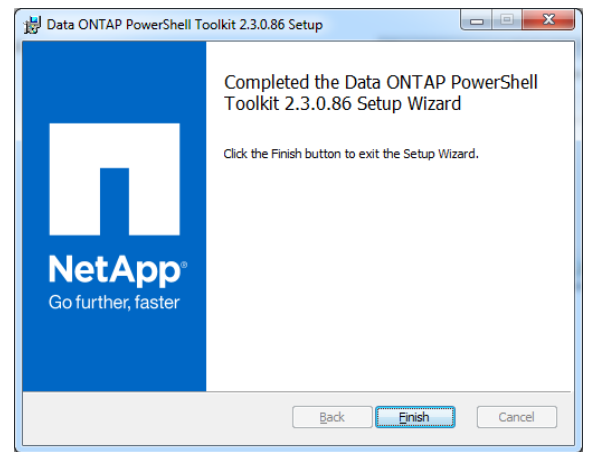
- 5) Accept the default or change the Destination folder path and click Next.



6) Click Install.

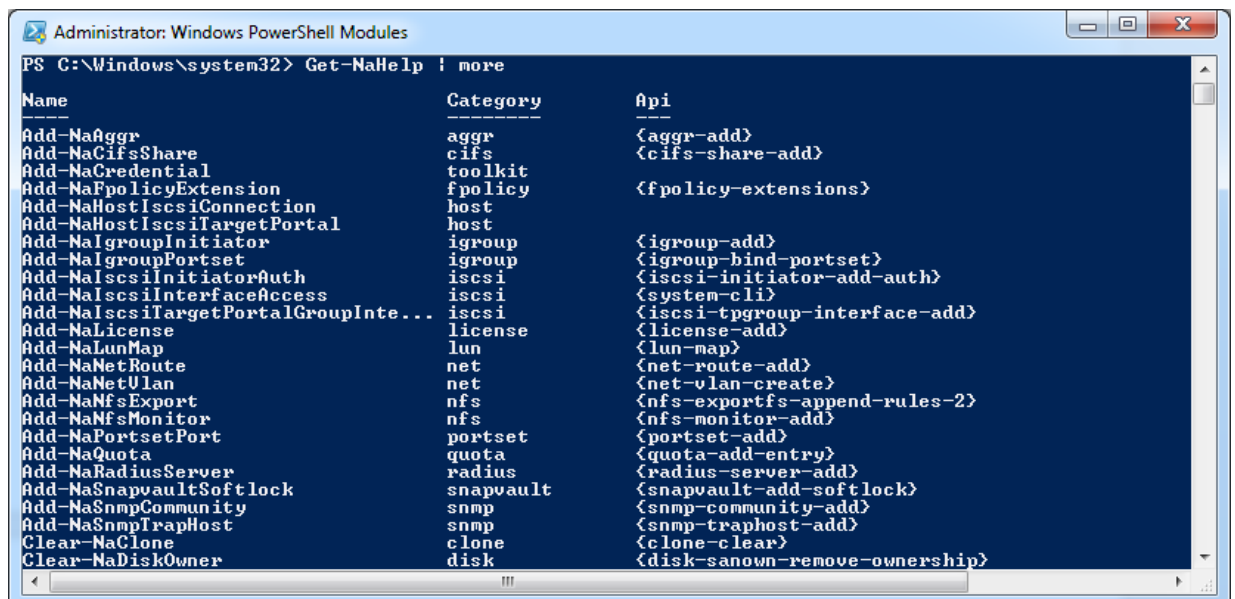


7) Click Finish.



8) Click Start > All Programs > Administrative Tools > Windows Powershell Modules. The cmdlets will load automatically. In the PS prompt enter the command below to test that the cmdlets are available. You can press the spacebar to scroll through the list of cmdlets.

a. PS C:\Windows\system32> Get-NaHelp | more



9) To access the browser based help and man pages for each cmdlet enter the command below.

a. > Show-NaHelp

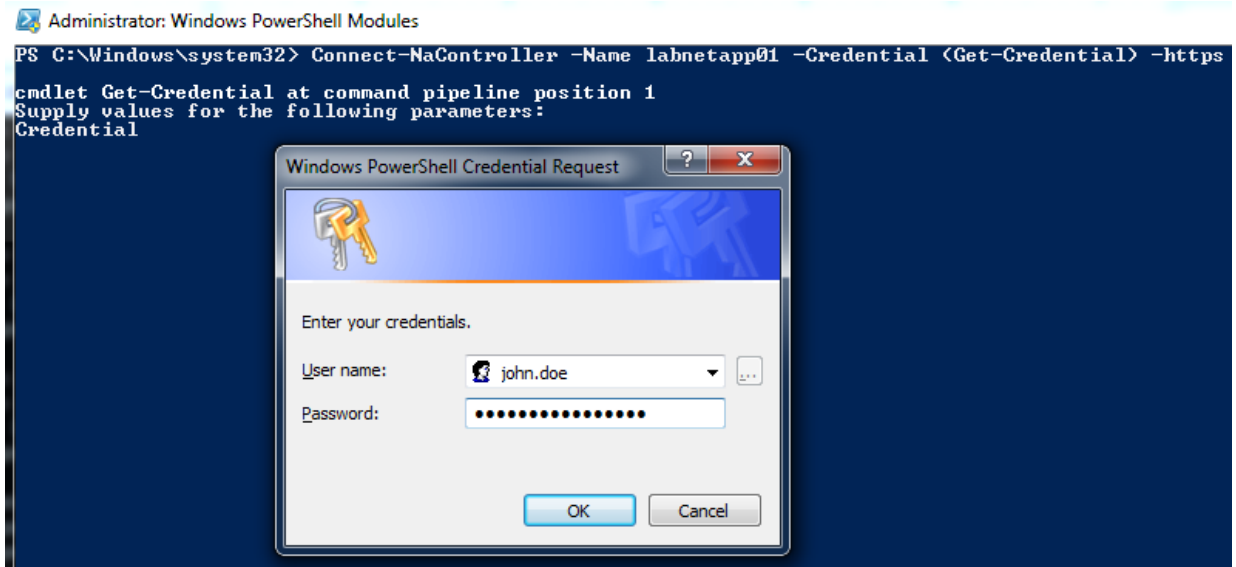
[Switch to Data ONTAP Cluster-mode documentation.](#)

All cmdlets

- [Add-NaAggr](#)
- [Add-NaCifsShare](#)
- [Add-NaCredential](#)
- [Add-NaFpolicyExtension](#)
- [Add-NaHostIscsiConnection](#)
- [Add-NaHostIscsiTargetPortal](#)
- [Add-NaGroupInitiator](#)
- [Add-NaGroupPortset](#)
- [Add-NaIscsiInitiatorAuth](#)
- [Add-NaIscsiInterfaceAccess](#)
- [Add-NaIscsiTargetPortalGroupInterface](#)
- [Add-NaLicense](#)
- [Add-NaLunMap](#)
- [Add-NaNetRoute](#)
- [Add-NaNetVlan](#)
- [Add-NaNfsExport](#)
- [Add-NaNfsMonitor](#)
- [Add-NaPortsetPort](#)

10) Connect to a controller. There are a few ways to do this. The command below prompts you to authenticate.

a. > Connect-NaController -Name labnetapp01 -Credential (Get-Credential) -https



11) Read the man pages and command examples and have fun.